



tourism

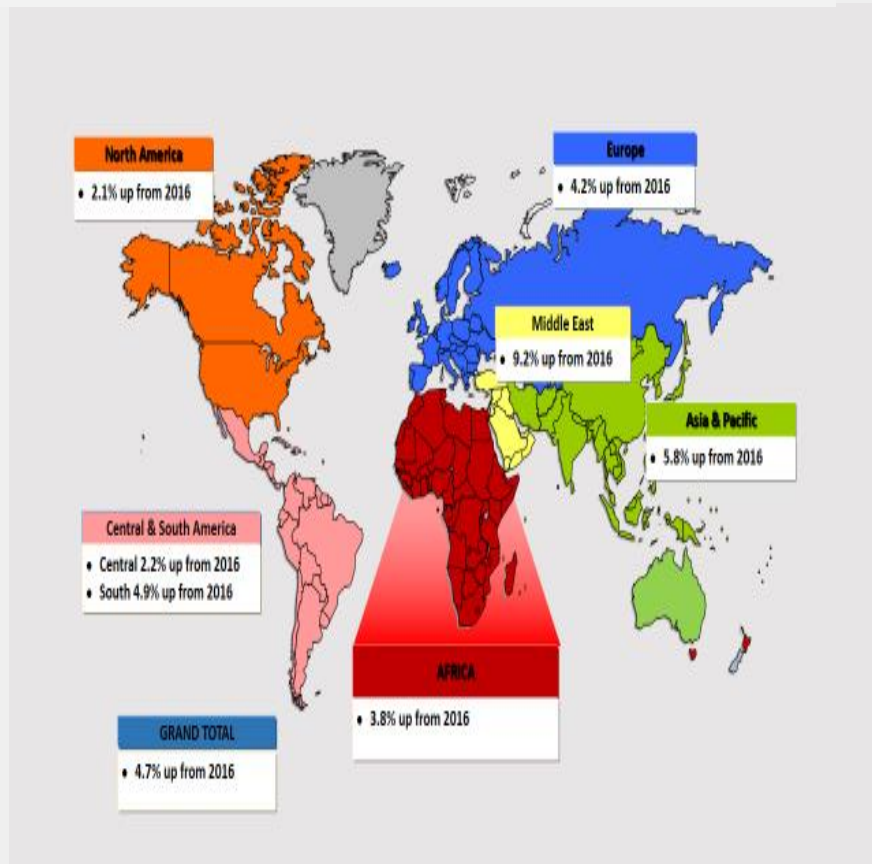
Department:  
Tourism  
REPUBLIC OF SOUTH AFRICA

### TOURISM QUARTERLY FACTSHEET 2017 Volume 1: 11 September 2017

## GLOBAL TOURISM PERFORMANCE

### Global tourist arrivals performance (Jan-March 2017)

Global tourist arrivals increased by 4.7% for the period Jan-March 2017 compared to Jan-March 2016.

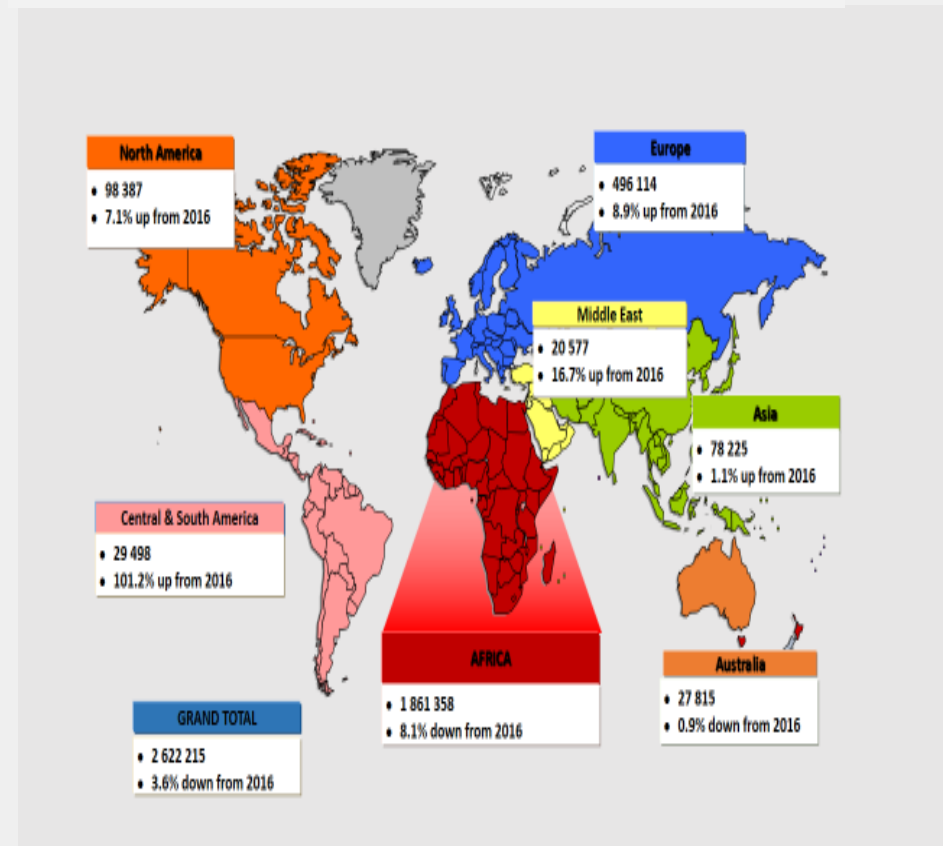


Source: UNWTO Barometer: June 2017

## SOUTH AFRICA INBOUND TOURISM PERFORMANCE

### South Africa tourist arrivals performance (Jan-March 2017)

South African tourist arrivals decreased by -3.6% for the period Jan-March 2017 compared to Jan-March 2016.



Source: Stats SA: Tourism and Migration report: Jan-March 2017

**TOURISM QUARTERLY FACTSHEET**  
 2017 Volume 1: 11 September 2017

**South Africa Inbound Tourism Key Indicators Performance (Jan-March 2017)**

*Global tourist arrivals increased by 4.7% for the period Jan-March 2017 compared to Jan-March 2016.*

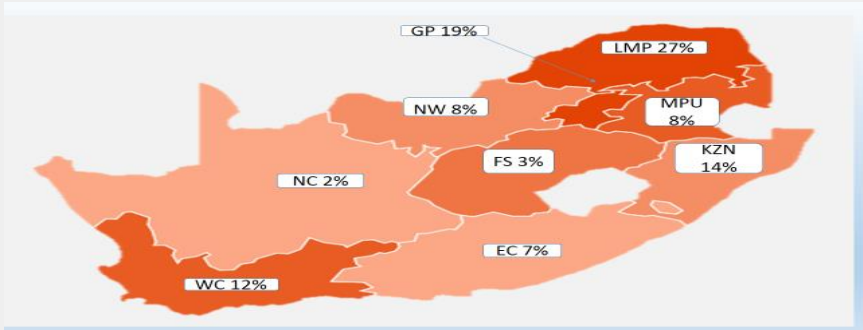


Source: SAT: Quarterly report: 2017

**SOUTH AFRICA DOMESTIC TOURISM INDICATORS**

**Provincial share of domestic trips (Jan-March 2017)**

*Most of the domestic trips for quarter one were in Limpopo, Gauteng and KZN.*



Source: SAT: Quarterly report: 2017

**South Africa Domestic Tourism Indicators (Jan-March 2017)**

*Comparing Jan-March 2017 to Jan-March 2016, there was a decline recorded in the key domestic indicators as shown below. .*



Source: SAT Quarterly reports, 2017.

**OTHER SOUTH AFRICA ECONOMIC TOURISM INDICATORS**

**Performance of the Air travel, accommodation and the food and beverages industries in South Africa (Jan-March 2017)**

*The accommodation and the food and beverages industry had a positive growth for the period Jan-March 2017 compared to Jan-March 2016. There was a 1.1% increase in the number of aircraft passengers for the period.*



Source: Airports Company South Africa and Stats SA, 2017.

**TOURISM QUARTERLY FACTSHEET**  
2017 Volume 1: 11 September 2017

**Tourism Employment (Jan-March 2017)**

For the quarter (Jan-March 2017), it is estimated that the tourism sector contributed about 734 544 jobs, which was about 4, 5% of total employment in South Africa. This was a 4.9% increase compared to Quarter 1 of 2016.



	Q1: 2016	Q1: 2017	Diff	% Growth
Total Direct Tourism Employment	700 519	734 544	34 025	4.9%

Source: Quarterly Labour Survey Force Survey Q1 (Jan-March 2017).  
\*The industry ratios applied by the Tourism Satellite Account was used to calculate Tourism employment

**KEY EVENTS HELD GLOBALLY AND NATIONALLY:  
JAN-MARCH 2017**


**GLOBAL EVENTS HELD DURING THE PERIOD JAN-MARCH 2017**



- World Economic Forum 2017, Davos, Switzerland: 17-20 January 2017
- 28th Assembly of Heads of State and Government of the African Union (AU), Addis Ababa, Ethiopia: 28-31 January 2017
- Working Visit by Minister Maite Nkoana-Mashabane to Beijing, People's Republic of China: 18-19 February 2017
- SADC Inter-State Politics and Diplomacy Committee (ISPDC) Meeting, Dar-Es-Salaam, United Republic of Tanzania: 20-24 February 2017
- High-Level Segment of the 34th Session of the United Nations Human Rights Council (HRC34), Geneva, Switzerland: 27 February 2017-01<sup>ST</sup> March 2017


Source: Event search on Google; Jan-March: 2017

**OTHER KEY SOUTH AFRICAN ECONOMIC INDICATORS**




**Unemployment Rate**

27,7% in the first quarter of 2017



**GDP**

Expenditure on GDP -0,8% in Q1 2017 (quarter-on-quarter) Seasonally adjusted and annualised



**Fuel Prices**

	Inland	Coastal
Unleaded 93	R13.30	R12.95
Unleaded 95	R13.54	R13.06
Diesel (0.05%)	R11.61	R11.24

Source: Stats SA: Economic Report for Q1, 2017.

**EVENTS HELD IN SOUTH AFRICA DURING THE PERIOD JAN-MARCH 2017**



- African Energy Indaba : Date: 21-22 FEBRUARY 2017 Event Format: Exhibition
- 16th Metro FM Awards: Date: 25 FEBRUARY 2017: Event Format: Awards ceremony aimed at awarding the SA local music industry.
- African Trade Summit : Date: 07-08 MARCH 201: Event Format: Exhibition
- SAFTAS: Date: 27 MARCH 2017
- Energy Efficiency World Africa: Date: 28-29 MARCH 2017 Event Format: Conference
- Cape Town Jazz Festival: Date: 31 MARCH 2017 Venue: CTICC

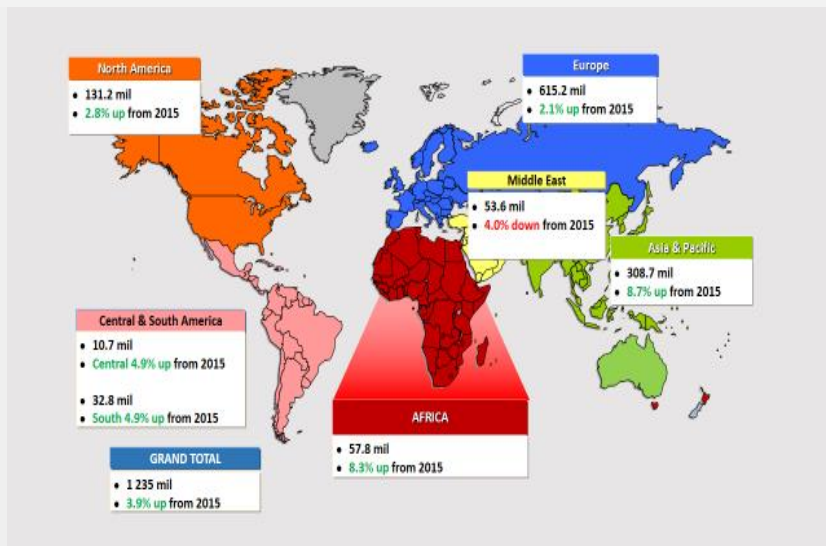
Source: Event search on Google; Jan-March: 2017



**TOURISM QUARTERLY FACTSHEET**  
**2017 Volume 1: 11 September 2017**  
**TOURISM ANNUAL PERFORMANCE**

**Global tourist arrivals performance: 2016**

*Global tourist arrivals for 2016 was 1, 235 million which was a 3.9% increase compared to 2015 (1, 189 million).*



Source: SAT: UNWTO Barometer 2017

**GLOBAL TOURISM ECONOMIC PERFORMANCE: 2016**

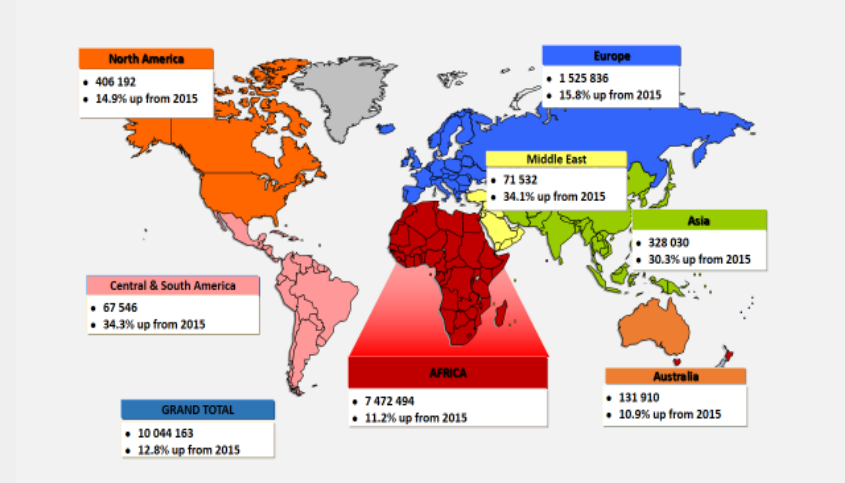
*In 2016, tourism's direct contribution to GDP was USD 2, 304 bn resultina in 3.0% of the total GDP.*



Source: WTTC, Travel and Tourism: 2017

**South Africa tourist arrivals performance: 2016**

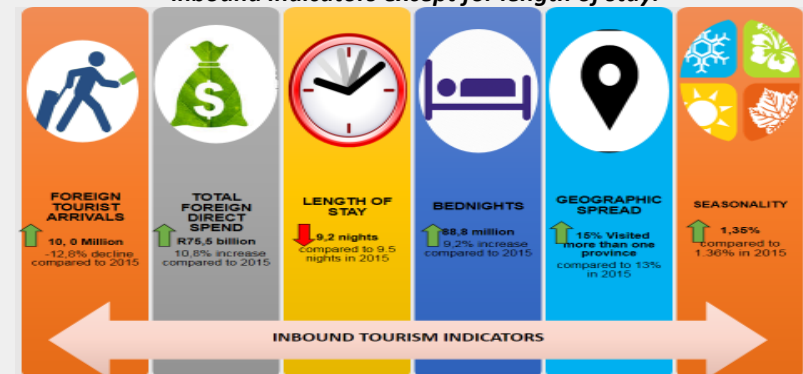
*South African tourist arrivals increased by 12.8% in 2016 reaching a total of 10,044, 163 million.*



Source: SAT: Annual Report, 2017.

**South Africa Inbound Tourism Key Indicators Performance: 2016**

*Comparing 2016 to 2015, there was an increase recorded in most of the key inbound indicators except for length of stay.*



Source: SAT: Annual Report, 2017.

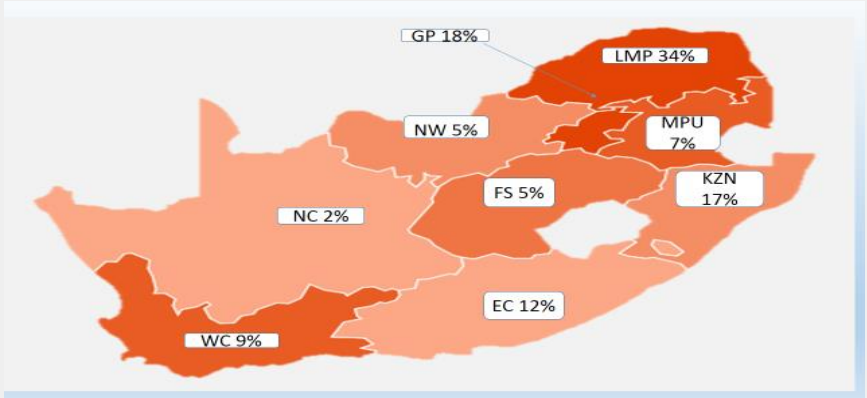


**TOURISM QUARTERLY FACTSHEET**  
 2017 Volume 1: 11 September 2017

**SOUTH AFRICA DOMESTIC TOURISM INDICATORS**

**Provincial share of domestic trips: 2016**

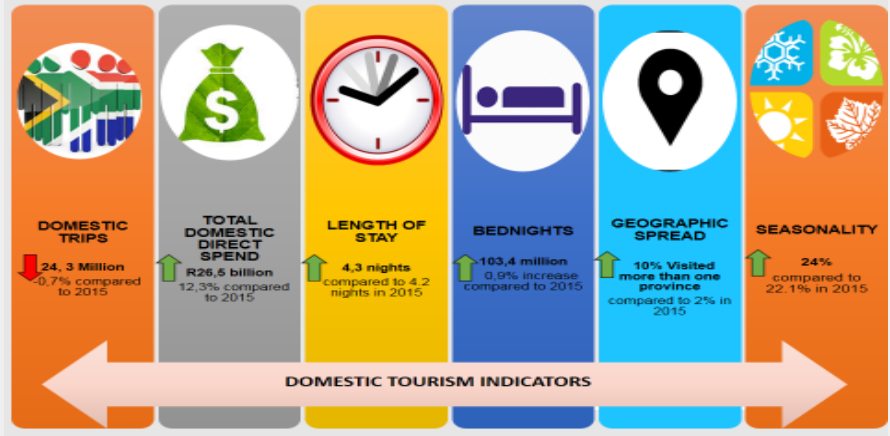
*Most of the domestic trips for quarter one were in Limpopo, Gauteng and KZN.*



Source: SAT: Annual Report: 2017

**South Africa Domestic Tourism Indicators: 2016**

*Comparing 2016 to 2015, there was an increase recorded in the key domestic indicators as shown below. .*



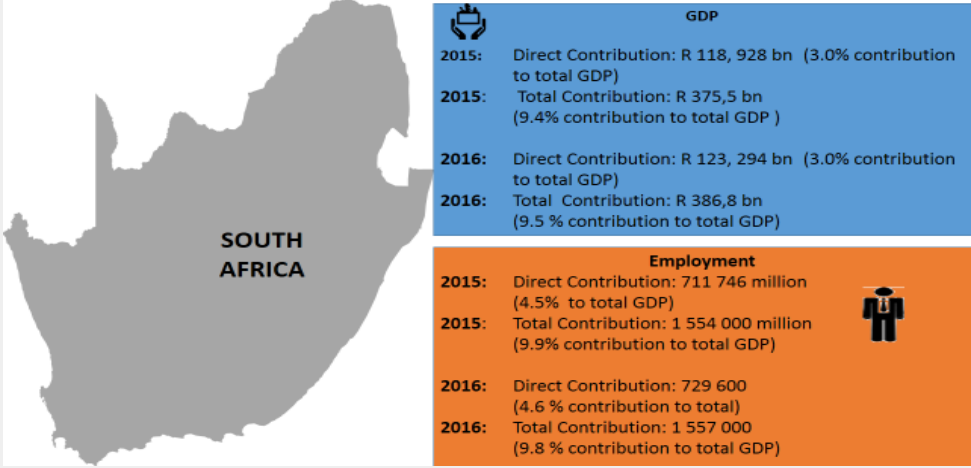
Source: SAT Annual Report, 2017.

**SOUTH AFRICA ECONOMIC TOURISM PERFORMANCE:**

**2016**

**South Africa Tourism GDP and Employment Contribution: 2016**

*In 2016, tourism's direct contribution to GDP was R118, 928 bn which contributed 3.0% of the total GDP.*



Source: Tourism Satellite Account: 2015; Stats SA 2016. 2016: WTTTC estimates

**REFERENCES**

- [http://cf.cdn.unwto.org/sites/all/files/pdf/unwto\\_barom17\\_03\\_june\\_excerpt\\_1.pdf](http://cf.cdn.unwto.org/sites/all/files/pdf/unwto_barom17_03_june_excerpt_1.pdf)
- [http://www.southafrica.net/uploads/files/Tourists\\_Table\\_B\\_March\\_2017.pdf](http://www.southafrica.net/uploads/files/Tourists_Table_B_March_2017.pdf)
- <http://www.statssa.gov.za/publications/P6410/P6410March2017.pdf>
- [http://www.statssa.gov.za/?page\\_id=1854&PPN=P6410&SCH=6844](http://www.statssa.gov.za/?page_id=1854&PPN=P6410&SCH=6844)
- [http://www.statssa.gov.za/?page\\_id=1854&PPN=P6420&SCH=6846](http://www.statssa.gov.za/?page_id=1854&PPN=P6420&SCH=6846)
- <http://www.airports.co.za/Documents/Aviation%20Barometer%20Q1%202017%20Figures.PDF>
- [http://www.southafrica.net/uploads/files/Domestic\\_Tourism\\_Performance\\_Report\\_Q1\\_2017\\_v2\\_12062017.docx.pdf](http://www.southafrica.net/uploads/files/Domestic_Tourism_Performance_Report_Q1_2017_v2_12062017.docx.pdf)
- [http://www.southafrica.net/uploads/files/2016\\_Annual\\_Report\\_v5\\_20072017.pdf](http://www.southafrica.net/uploads/files/2016_Annual_Report_v5_20072017.pdf)
- <http://www.statssa.gov.za/publications/P0141/P0141June2017.pdf>
- <https://www.wttc.org/>
- [/media/files/reports/economic%20impact%20research/regions%202016/world2016.pdf](http://www.southafrica.net/uploads/files/2016_Annual_Report_v5_20072017.pdf)
- <http://www.statssa.gov.za/publications/Report-04-05-07/Report-04-05-072013.pdf>
- <https://www.wttc.org/datagate>